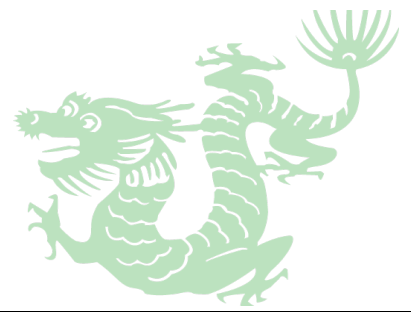




SCIS Middle School Dragon Bulletin



Bulletin 23

23 February 2015

Principal's Message ~Tina Santilli

Xin Nian Kuai Le!

We wish everyone a prosperous year. We hope everyone had a restful break whether you enjoyed time celebrating with family or traveling to places near and far.

Middle School Coffee Morning

On behalf of Sophie de Bellescize (P.A.F.A. VP for MS)

Tuesday March 3rd, 10 to 12

The Bread Basket

3190 Hong Mei Lu (next to Starbucks)

On top of any school topics you would like to discuss, we will share travel tips in and out of China. Maps, brochures, photos and vivid memories are welcome! Where to go and when to do it! The highs & lows of exploring this exciting part of the world! Teenage fun in Singapore, get active in Cambodia, trek to the hill tribes in Thailand, follow the monks in Laos, etc...

Lunar New Year Celebrations

I want to give special thanks to our outstanding Mandarin Department, Carolyn Zhang, Christina Wang and Jessica Feng, and our exceptional Dance teacher, Fiona Sherwood, for the range of Chinese cultural experiences they offered our students last week. Individual credit also goes to Jenny (in the Lower School) for organizing the Peking Opera Troupe's performance. Jenny also organized for our school to be showcased on the news. The link to the news piece can be found at:

http://domhttp.kksmg.com/2015/02/13/h264_450k_mp4_IC15000002015021311562951091_aac.mp4

Innovative Global Education (IGE) Consultant Visit

Tania Lattanzio, the Regional Director of IGE will be returning next week. During her visit, Mrs. Lattanzio will work intensively with teaching teams and model pedagogy in classrooms to refine planning, teaching and assessment with the focus on student learning.

Re-enrollment for 2015-2016

On behalf of Anne Hunt, Director of Admissions

Parents will only have the option to re-enroll their children through PowerSchool. We encourage parents to participate in early re-enrollment of their children through PowerSchool because of its ease and efficiency. If you are unsure of your username and password, or have forgotten it, please contact our **Middle School Secretary, Sunny Jiang** at sjiang@scischina.org. Her extension is 3153. We anticipate full classes at many grade levels and wish to ensure all of our current families have first priority. Please let the admissions office know if we can assist you in any way through the re-enrollment process. We look forward to your continued support and involvement in our school community and hope to welcome your family for yet another successful school year.

Upcoming Events

March 3

MS Coffee Morning 10 to 12 @ the Bread Basket

March 2-6

Consultant from ICE working with Lower and Middle school faculty

March 11-13

Prevention Specialists from FCD will work with students

March 12

FCD Parent Workshop (6: 00pm-7: 30pm)

March 17-18

Student Led Conferences

March 26-April 3

Spring Break

Cafeteria Menu can be viewed at:

<https://hq.scis-his.net/content/lunch-menu>

Contact Mandy for menu and other cafeteria related matters.

cafeteria@scischina.org

Important Contact Information:

Tina Santilli, MS Principal
(tsantilli@scischina.org)

Bret Olson, MS Vice Principal
(bolson@scischina.org)

Catherine Geisen-Kisch MS counselor
(cgeisenkisch@scischina.org)

Erika Zamudio MS Learning Support
(ezamudio@scischina.org)

Kevin Reimer

Athletics and Activities Coordinator
kreimer@scischina.org

Noah Randall, Aquatics Director
nrandall@scischina.org
[Aquatics Website](#)

Middle School Secretaries

Lisa Ni (lni@scischina.org)

Sunny Jiang (sjiang@scischina.org)

MS Office 6261-4338 ext. 3153

Nurse's Office

6261-4338 ext 5101

Transportation

Ms. Elaine Huang at

transportationhq@scischina.org

86-21-6261-4338 ext. 3151

1

2

3